



****AVAILABLE OCTOBER 2025** **FIRST FLOOR CONVERSION APARTMENT****

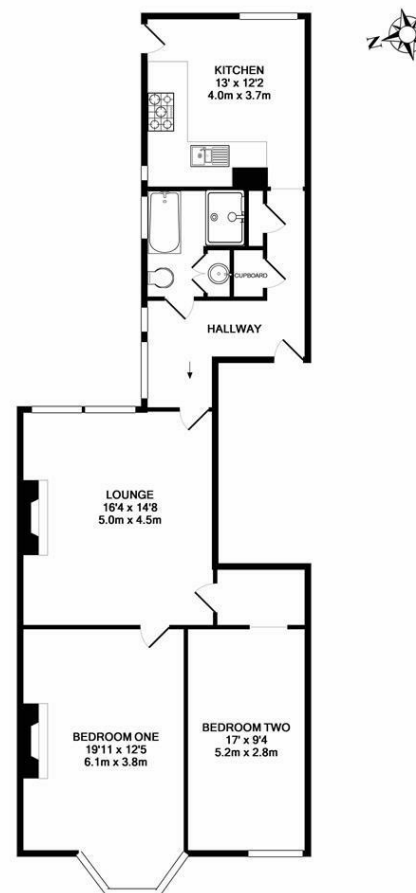
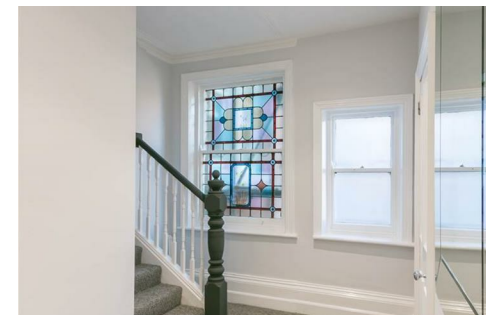
****UNFURNISHED**** A super slick first floor conversion apartment located on St Georges Terrace in Central Jesmond. With two large double bedrooms, a plush bathroom WC and modern fitted dining kitchen, this property must be seen to be appreciated!

The property briefly comprises a communal entrance hall with stairs to the first floor. The apartment itself is set over split levels and boasts an entrance hall, a large dining kitchen to the rear of the property with appliances including a dishwasher, washing machine, free standing fridge freezer, electric oven & five burner gas hob. There is a plush family bathroom WC, with bath, step in shower cubicle, WC and vanity unit wash basin. Up to the lounge which is central to the property, with varnished original wood flooring and feature fireplace. From the lounge you can then access two double bedrooms, both large doubles, the master of which also with a feature fireplace.

Available on an unfurnished basis, this fantastic apartment would suit either a professional couple or sharers alike.

Available 4th October 2025 | £1,350pcm | First Floor Conversion Apartment | 989 Sq. ft (91.9 m²) | Two Double Bedrooms | Plush Bathroom WC | Modern Dining Kitchen | Lounge | Storage Space | Unfurnished | On Street Permit Parking | Great Location | GCH | Council Tax Band: C | EPC Rating: D

£1,350 PCM



TOTAL APPROX. FLOOR AREA 989 SQ.FT. (91.9 SQ.M.)
Whilst every attempt has been made to ensure the accuracy of the floor plan contained here, measurements of doors, windows, rooms and any other items are approximate and no responsibility is taken for any error, omission, or mis-statement. This plan is for illustrative purposes only and should be used as such by any prospective purchaser. The services, systems and appliances shown have not been tested and no guarantee as to their operability or efficiency can be given.
Made with Metropix ©2017

IMPORTANT NOTE: These particulars and the descriptions and measurements herein do not constitute representation and whilst every effort has been made to ensure accuracy, this cannot be guaranteed.

